

Live and multi-user subtitling with Swift Create

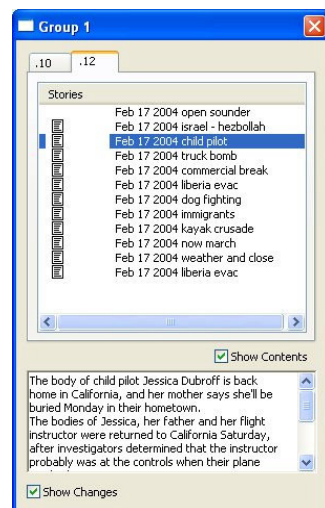


Subtitling live broadcasts

Broadcasters and content producers are increasingly subject to legislation requiring certain levels of subtitled output for Hard of Hearing viewers, while also wanting to maximise their audience with subtitled translations.

Live broadcasts require high speed input, in some cases using special input devices, often with integration with external systems such as prompters, newsroom scripting and automation.

Swift Create Live - *The solution for subtitling live programming*



Newsroom integration

generator, have been designed to reduce the industry accepted ratio of 16 work hours to 1 hour of prepared subtitles as far as possible. This translates through to increased productivity and reduced costs.

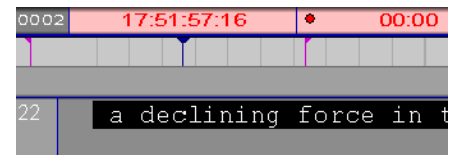
Benefits

- Flexible support for live subtitling
- Automated features for high quality output
- Tight integration with newsroom systems
- Respeaking and high speed input device support

Swift Create Live is an extension to the well established and highly successful Swift Create subtitle creation and repurposing solution. Backed by over 30 years unparalleled industry experience and expertise, Swift Create is a proven solution used by prestigious broadcasters, facilities houses and numerous freelancers across the globe.

Live subtitling features include integration with newsrooms, co-operative subtitling and speech input, which enable the efficient production of accurate subtitles for live programmes and news.

Swift Create truly is the subtitlers solution of choice. Its many time saving features, such as 'in-flight' integrity checking, non-linear editing and approvals



Live transmission

Newsroom integration and live programming subtitling

The Swift Create Live option extends standard editing functions, adding features specifically designed for the subtitling of live programming.

In a news programme it is useful to split subtitles into a number of 'stories' that match the story items in the news programme, Swift Create Live allows programme running order data and prompter scripts to be imported from Newsroom systems.

With support for newsroom systems such as ENPS, iNews and Dalet, newsroom running order changes are reflected in Swift Create right up to the last second. Entire running orders or individual stories can be imported, with story text automatically converted to subtitles based on user preferences. Changes from the newsroom can be re-imported, or highlighted in the newsroom window, to allow rapid manual alteration.

Subtitlers can choose to only follow items in the newsroom that are of interest, allowing the user to easily differentiate between genuine stories and other objects such as placeholders, before importing a running order.

For unscripted live stories Swift Create Live accepts subtitle input in a variety of ways including standard keyboards, Steno, Velotype or Veyboard devices, as well as third party speech-to-text applications.

Swift Create Live subtitling features	
<ul style="list-style-type: none">• Multi User Subtitling• Live Transmission via multiple routes• Mixed Mode Subtitling• Respeaking / speech-to-text• Single Key Transmission• Word-by-Word transmission• Key Press Correction	<ul style="list-style-type: none">• News Room integration• Transmission status monitoring• Programmes and Stories• Multi-language spell checking in one document• Single Key word selection• Auto-correct on transmission• Short forms

Multi-User subtitling in a live environment

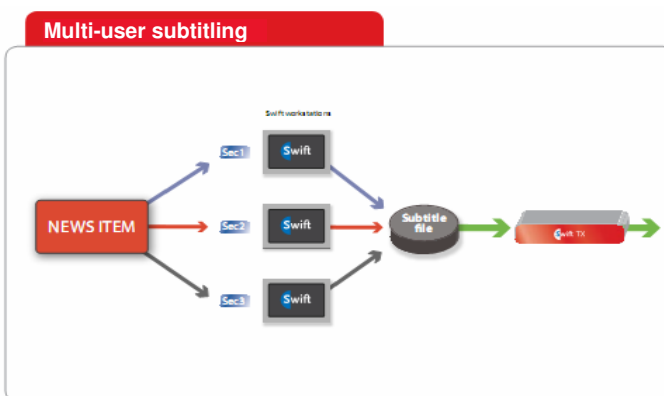
With a multi-user license, an unlimited number of users can interact in a Swift Create session – creating, editing, correcting and transmitting subtitles. It uses a central server to store and manage the subtitle content.

Subtitlers can work together to produce accurate captions or subtitles quickly, with customisable screen layouts to suit each task in the workflow.

Subtitles can be sent live to air from Swift Create via Swift TX or other supported hardware, with the ability to create any number of transmission routes Open and Closed subtitling. Transmission status can be monitored in both Closed and Open from within Swift Create.

Automatic subtitle correction ensures errors are minimized. Swift Create Live's shortform facility enables words or abbreviations to be replaced automatically, for example, replacing 'teh' with 'the'. Multi language spell checking helps ensure accurate subtitling, even when mixing languages in the same caption, while 'Word Lists' help subtitlers working on programmes with specialized vocabulary such as sports.

Single key word select, or Correction Mode allows whole words to be highlighted at the press of a key. Each word in a subtitle is underlined with a colour, corresponding to one of the function keys. Misspelled words are simple to select and correct, aiding efficiency and quality control.



Pangbourne (near Reading), UK
Servicing APAC and EMEA
+44 118.984.2151
info@softelgroup.com

New York area, USA
Servicing the Americas
+1 203.354.4602
info@softel-usa.com

Los Angeles, USA
Servicing the Americas
+1 310.878.2789
info@softel-usa.com

Powering Television Beyond the Video™